

# 9.289 Acres R-1 Zoned Land Kihei, Maui For Sale \$2,500,000 (FS)



Corner of Kaiwahine and  
Hale Kai Street  
Kihei, Maui, Hawaii

**Exclusively offered For Sale by**

Grant E. Howe, CCIM R(B) and Gregory L. Sheehan, PB



COMMERCIAL PROPERTIES  
OF MAUI

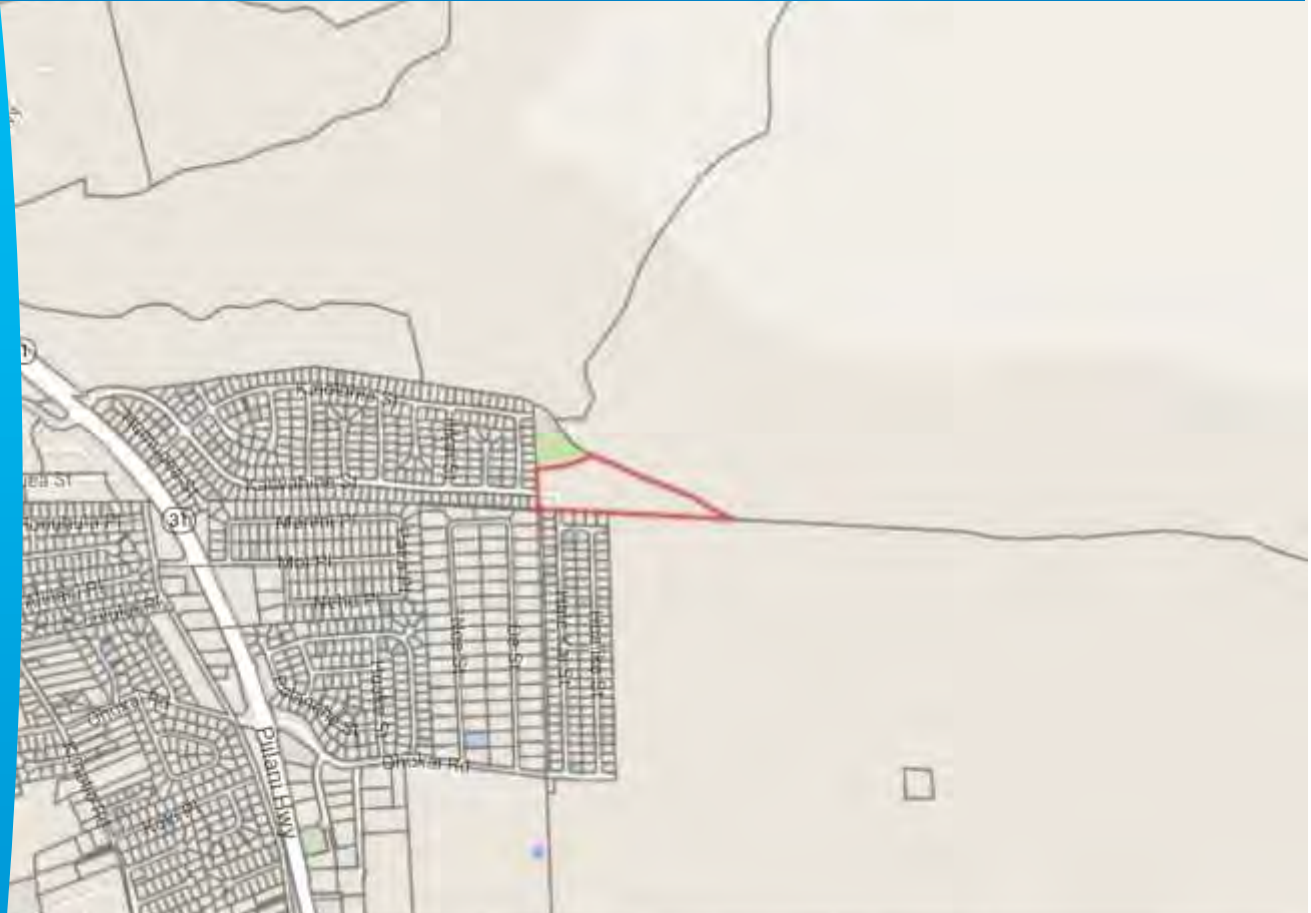
2145 Wells Street, #105 Wailuku, HI 96793-2225

(808)244-2200 OFFICE | (808)442-1195 FAX

www.mauibiz.com | gsheehan@mauibiz.com E-MAIL



# Kaiwahine Street



## Kihei, Maui, Hawaii

PRICE	\$2,500,000 FS
LAND AREA	9.289 ACRES
PRICE PER SQ.FT.	\$6.18
TMK	(2) 3-8-004-028
ZONING	R-1
REAL PROPERTY TAXES	\$4,354.57 per year
DOCUMENTS AVAILABLE	ALTA Survey, Appraisal, Affordable Housing Agreement, Phase I Environmental Site Assessment, Preliminary Title Report, Conceptual Site Plan

3% Commission to Cooperating Brokers.

The information contained herein comes from sources deemed reliable, but no warranties or guarantees as to the accuracy of the information should be construed.

**GRANT E. HOWE, CCIM R(B) AND GREGORY L. SHEEHAN, PB**

2145 Wells Street #105 Wailuku, HI 96793 | (808)244-2200 OFFICE | (808)442-1195 FAX

www.mauibiz.com | ghowe@mauibiz.com | gsheehan@mauibiz.com E-MAIL



# Parcel Map



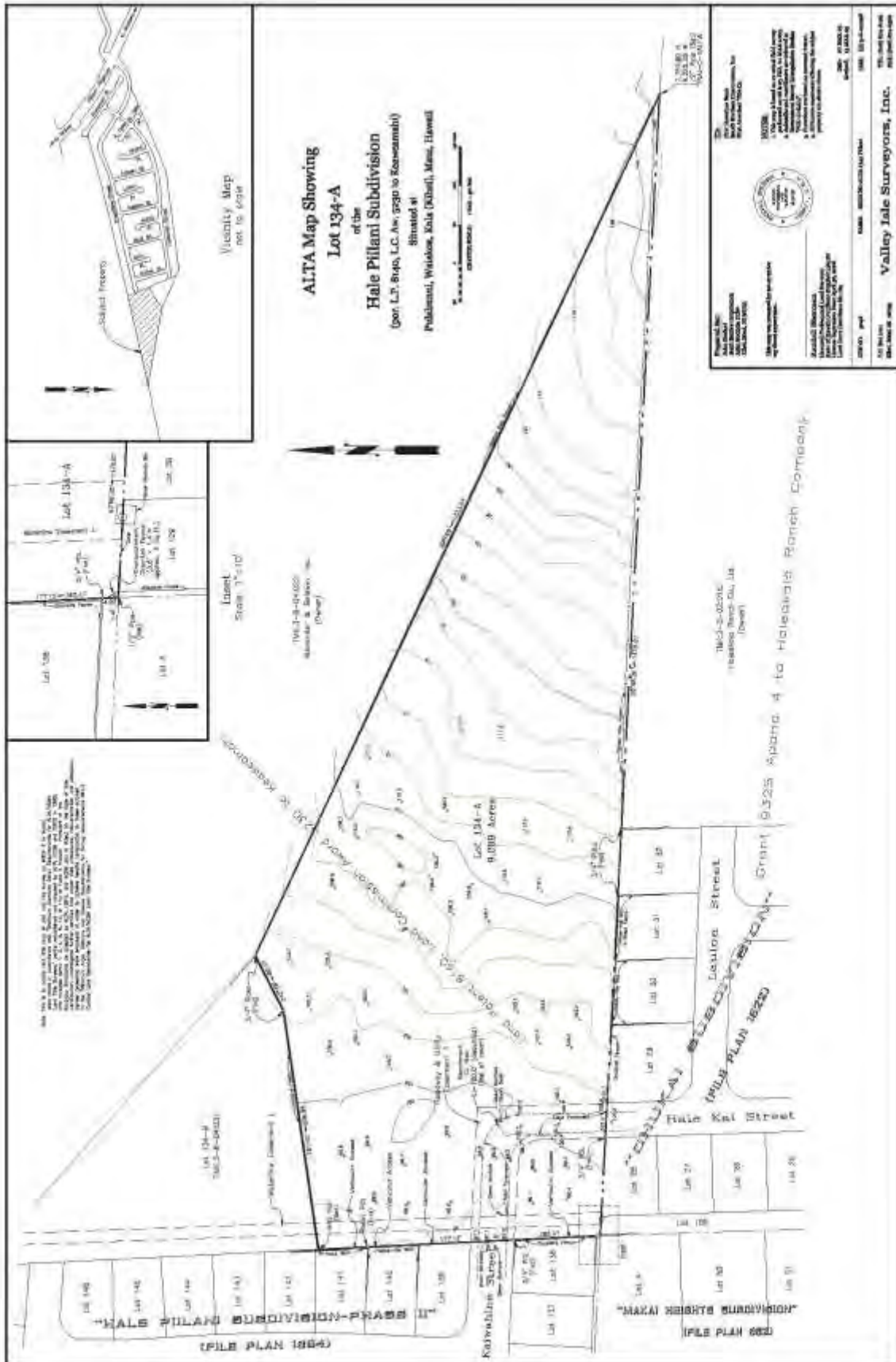
**GREGORY L. SHEEHAN, PB**

2145 Wells Street #105 Wailuku, HI 96793 | (808)244-2200 OFFICE | (808)442-1195 FAX

[www.mauibiz.com](http://www.mauibiz.com) | [gsheehan@mauibiz.com](mailto:gsheehan@mauibiz.com) E-MAIL



# ALTA Survey



The information contained herein comes from sources deemed reliable, but no warranties or guarantees as to the accuracy of the information should be construed.