

Vacant Land in Wailuku For Sale \$620,000 Fee Simple



1838 Lower Main Street
Wailuku, Maui, Hawaii

Exclusively offered For Sale by

Grant E. Howe, CCIM R(B) and Gregory L. Sheehan, PB



COMMERCIAL PROPERTIES
OF MAUI

2145 Wells Street, #105 Wailuku, HI 96793-2225

(808)244-2200 OFFICE | (808)442-1195 FAX

www.mauibiz.com | ghowe@mauibiz.com | gsheehan@mauibiz.com E-MAIL



1838 Lower Main Street



Wailuku, Maui, Hawaii

PRICE	\$620,000 FS
LAND AREA	16,352 SQ.FT.
PRICE PER SQ.FT.	\$37.92
TMK	(2) 3-4-018-001
ZONING	B-2
REAL PROPERTY TAXES	\$868.56 per year

PROPERTY DESCRIPTION

Conveniently located near medical and professional offices, restaurants, County & State offices and Court House

3% Commission to Cooperating Brokers. Co-listed with Christina Berry of iProperties Hawaii in Honolulu.

The information contained herein comes from sources deemed reliable, but no warranties or guarantees as to the accuracy of the information should be construed.

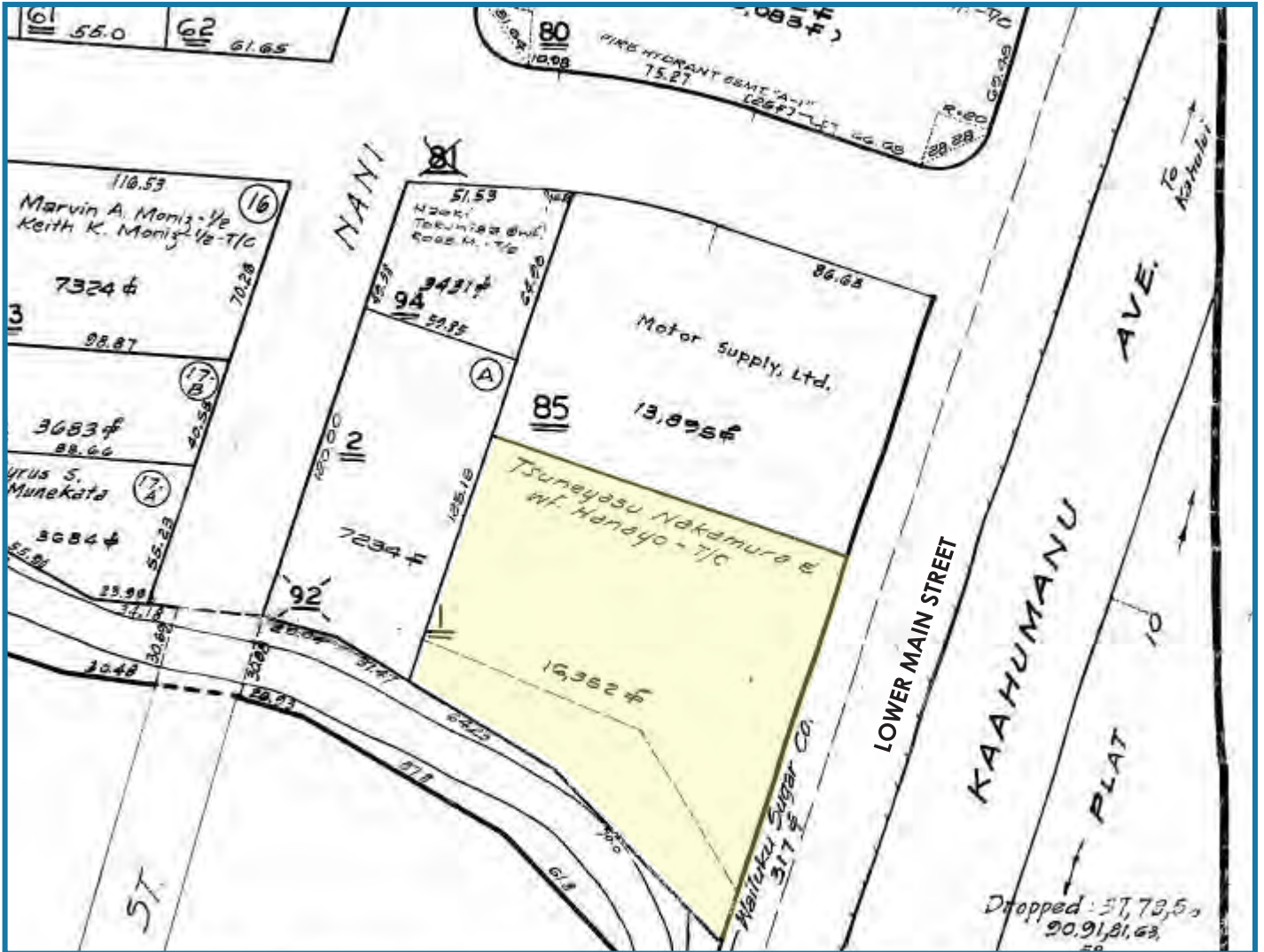
GRANT E. HOWE, CCIM R(B) AND GREGORY L. SHEEHAN, PB

2145 Wells Street #105 Wailuku, HI 96793 | (808)244-2200 OFFICE | (808)442-1195 FAX

www.mauibiz.com | ghowe@mauibiz.com | gsheehan@mauibiz.com E-MAIL



Parcel Map



GRANT E. HOWE, CCIM R(B) AND GREGORY L. SHEEHAN, PB

2145 Wells Street #105 Wailuku, HI 96793 | (808)244-2200 OFFICE | (808)442-1195 FAX

www.mauibiz.com | ghowe@mauibiz.com | gsheehan@mauibiz.com E-MAIL

