

Prime Retail Development Opportunity

\$1,550,000 Fee Simple



Ma'alaea Harbor Village, Lot 5
Wailuku, Maui, Hawaii

Exclusively offered For Sale by

Grant E. Howe, CCIM R(B)



COMMERCIAL PROPERTIES
OF MAUI

2145 Wells Street, #105 Wailuku, HI 96793-2225

(808)244-2200 OFFICE | (808)442-1195 FAX

www.mauibiz.com | ghowe@mauibiz.com E-MAIL



Ma'alaea Harbor Village, Lot 5



Wailuku, Maui, Hawaii

PRICE	\$1,550,000 FS
LAND AREA	53,927 SQ.FT.
PRICE PER SQ.FT.	\$28.75
TMK	(2) 3-6-008-005
ZONING	B-2
REAL PROPERTY TAXES	\$10,677.48 per year
WATER METER	One 2" water meter

PROPERTY DESCRIPTION

Prime location adjacent to Maui Ocean Center. . Portion of Property is improved with parking stalls & lighting which is shared by way of cross easements with Maui Ocean Center & Ma'alaea Harbor Village.

3% Commission to Cooperating Brokers.

The information contained herein comes from sources deemed reliable, but no warranties or guarantees as to the accuracy of the information should be construed.

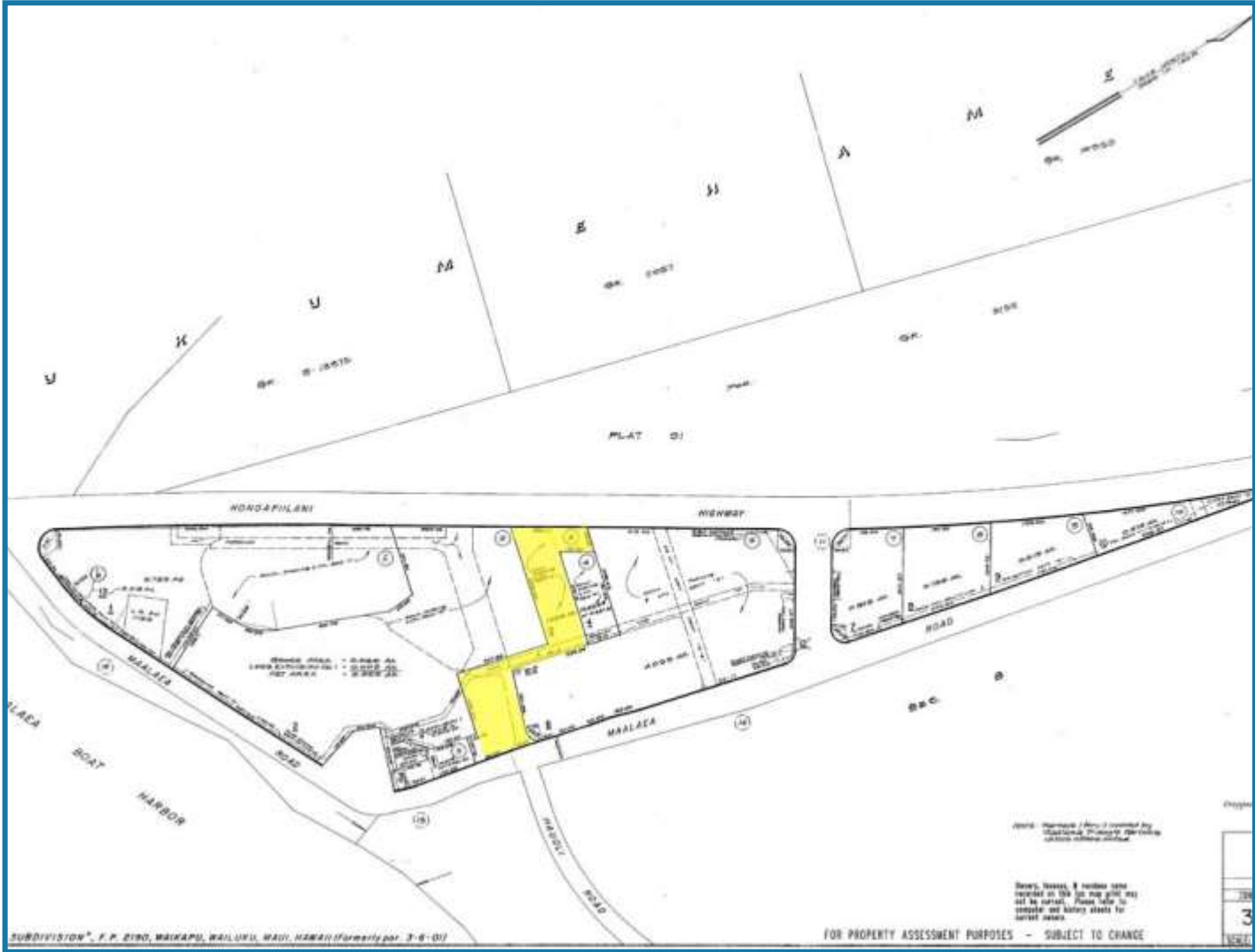
GRANT E. HOWE, CCIM R(B)

2145 Wells Street #105 Wailuku, HI 96793 | (808)244-2200 OFFICE | (808)442-1195 FAX

www.mauibiz.com | ghowe@mauibiz.com E-MAIL



Parcel Map



GRANT E. HOWE, CCIM R(B)

2145 Wells Street #105 Wailuku, HI 96793 | (808)244-2200 OFFICE | (808)442-1195 FAX

www.mauibiz.com | ghowe@mauibiz.com E-MAIL



The information contained herein comes from sources deemed reliable, but no warranties or guarantees as to the accuracy of the information should be construed.