

# Warehouse Investment Offering



325 Pakana Street, Units 1 & 2  
Wailuku, Maui

**Exclusively offered For Sale by**

BRANDON MCCORMICK R(S) AND GRANT E. HOWE, CCIM R (B)



COMMERCIAL PROPERTIES  
OF MAUI

444 Hana Highway, Suite C, Kahului, HI 96732

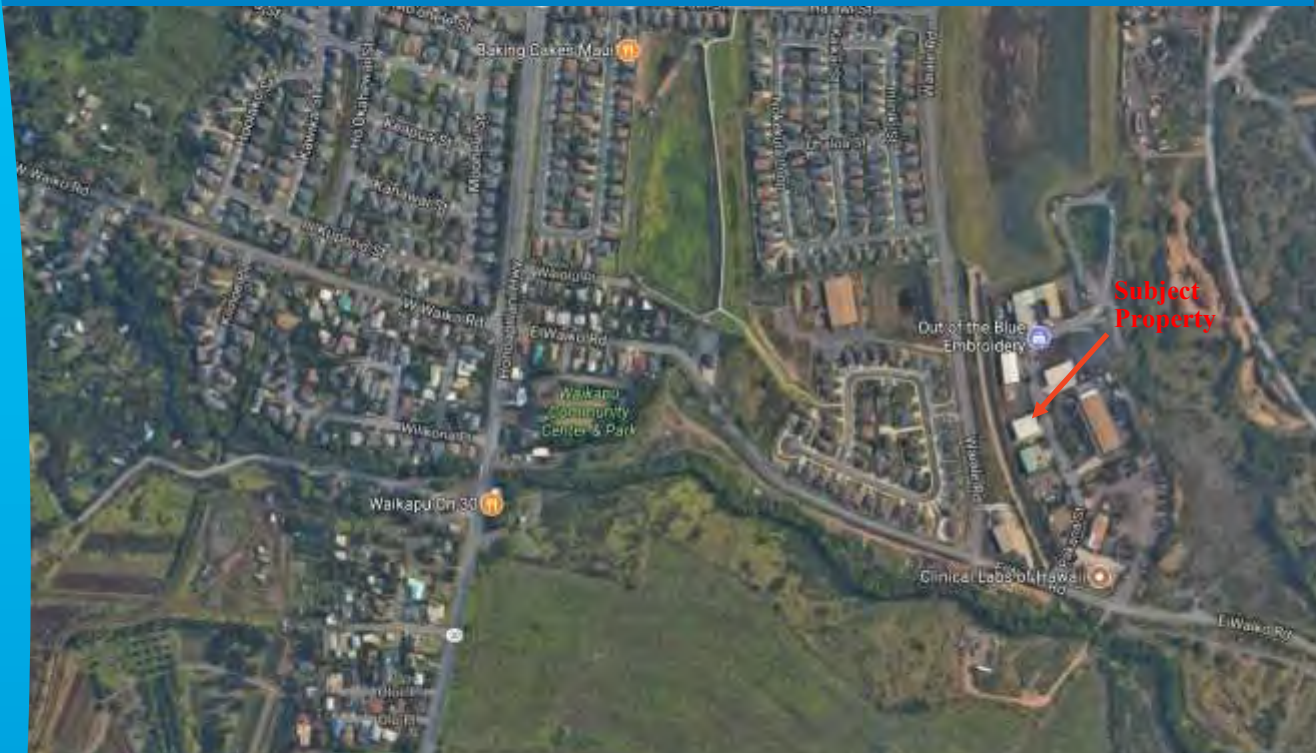
(808)244-2200 OFFICE | (808)442-1195 FAX

bmccormick@mauibiz.com | ghowe@mauibiz.com E-MAIL

www.mauibiz.com |



# 325 Pakana Street, Units 1 & 2



## Wailuku, Maui, Hawaii

PRICE	\$1,200,000 FS
UNIT 1 AREA	2,127 SQ FT
UNIT 2 AREA	1,774 SQ FT
COMBINED AREA	3,901 SQ FT
LAND AREA	14,073 SQ FT
PRICE /SQ FT (BLDG)	\$307.61 /SQ FT
ADDRESS	325 PAKANA STREET
TMK	(2) 3-5-27-4
CPR	1 & 2 *
ZONING	M-1
YEAR BUILT	2007
PARKING	6 stalls

\* Property is part of 3-unit CPR

3% Commission to Cooperating Brokers.

The information contained herein comes from sources deemed reliable, but no warranties or guarantees as to the accuracy of the information should be construed.

### TENANTS

Unit 1: A.V.S. Audio Visual Services  
Lease Term until 4/30/2018  
Unit 2: Waiside Gym & Fitness LLC  
Lease Term until 8/31/2018

Contact Listing Agents  
For Income and Expense  
Information



COMMERCIAL PROPERTIES  
OF MAUI

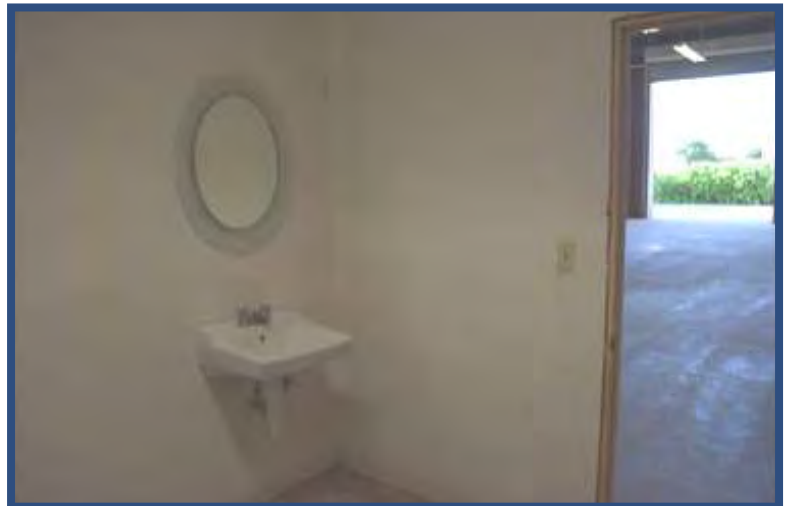
**BRANDON MCCORMICK R(S) AND GRANT E. HOWE, CCIM R(B)**

444 Hana Highway, #C, Kahului, HI 96732 | (808)244-2200 OFFICE | (808)442-1195 FAX

www.mauibiz.com | bmccormick@mauibiz.com | ghowe@mauibiz.com E-MAIL

The information contained herein comes from sources deemed reliable, but no warranties or guarantees as to the accuracy of the information should be construed.

# Property Photos (Unit 2)



**BRANDON MCCORMICK AND GRANT E. HOWE, CCIM R(B)**

444 Hana Highway, #C, Kahului, HI 96732 | (808)244-2200 OFFICE | (808)442-1195 FAX

www.mauibiz.com | bmccormick@mauibiz.com | ghowe@mauibiz.com E-MAIL





# Aerial View



**BRANDON MCCORMICK R(S) AND GRANT E. HOWE, CCIM R(B)**

444 Hana Highway, #C, Kahului, HI 96732 | (808)244-2200 OFFICE | (808)442-1195 FAX

www.mauibiz.com | bmccormick@mauibiz.com | ghowe@mauibiz.com E-MAIL



# Map



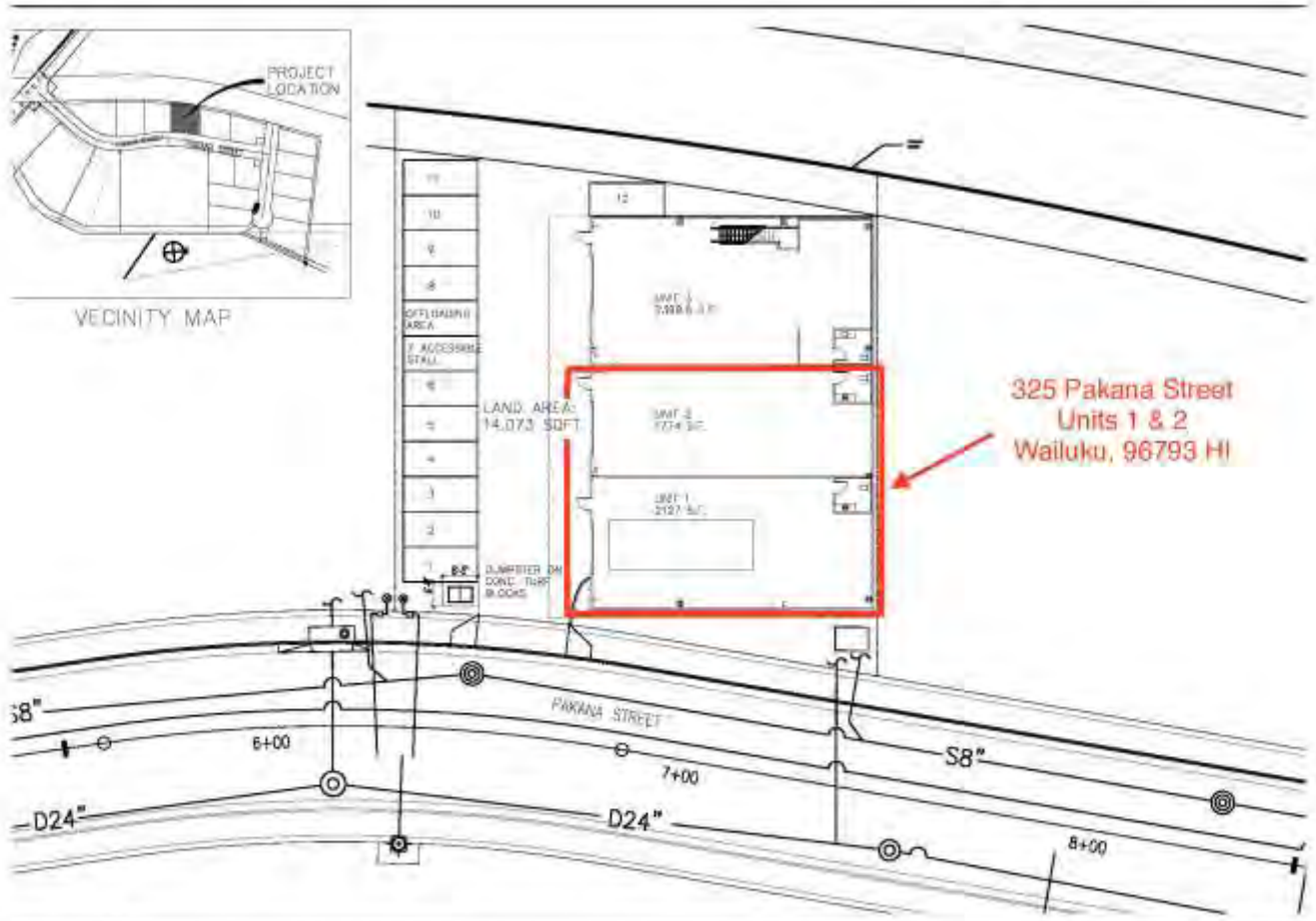
## **BRANDON MCCORMICK R (S) AND GRANT E. HOWE, CCIM R(B)**

444 Hana Highway, #C, Kahului, HI 96732 | (808)244-2200 OFFICE | (808)442-1195 FAX

[www.mauibiz.com](http://www.mauibiz.com) | [bmccormick@mauibiz.com](mailto:bmccormick@mauibiz.com) | [ghowe@mauibiz.com](mailto:ghowe@mauibiz.com) E-MAIL



# Site Plan



**BRANDON MCCORMICK R (S) AND GRANT E. HOWE, CCIM R(B)**

444 Hana Highway, #C, Kahului, HI 96732 | (808)244-2200 OFFICE | (808)442-1195 FAX

www.mauibiz.com | bmccormick@mauibiz.com | ghowe@mauibiz.com E-MAIL





# Tax Map



S E C : 8

DEPARTMENT OF TREASURY REAL PROPERTY TAX DIVISION TAX MAP		
COUNTY OF MAUI		
ZONE	SECTION	PLAT
3	5	27
SCALE: 1 IN = 50'		

**BRANDON MCCORMICK R(S) AND GRANT E. HOWE, CCIM R(B)**

444 Hana Highway, #C, Kahului, HI 96732 | (808)244-2200 OFFICE | (808)442-1195 FAX

www.mauibiz.com | bmccormick@mauibiz.com | ghowe@mauibiz.com E-MAIL

