



COMMERCIAL PROPERTIES OF MAUI LLC

SUITE 400, 1955 MAIN STREET, WAILUKU, HAWAII 96793

PHONE (808) 244-2200 FAX (808) 243-8614

WWW.MAUIBIZ.COM

Yard Space FOR LEASE

Consolidated Baseyards - Lot 12

TMK 2-3-8-94-012

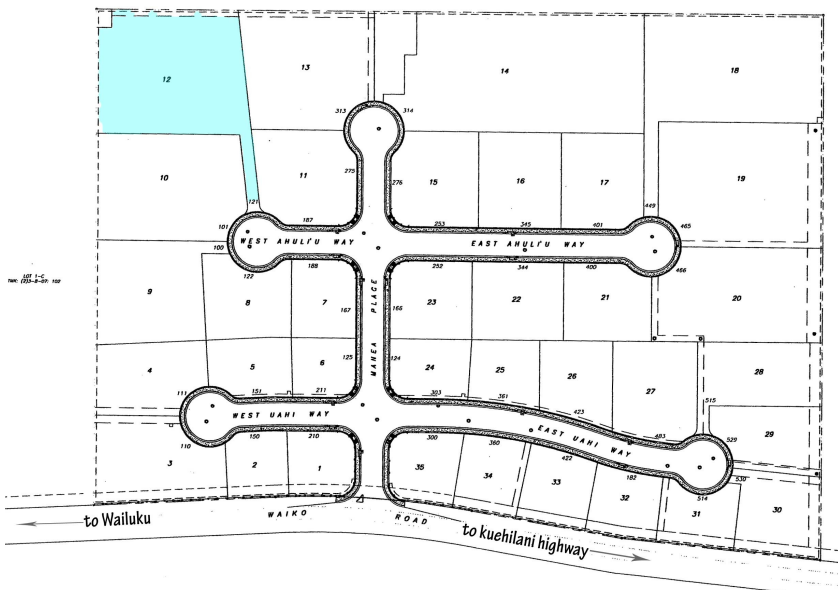
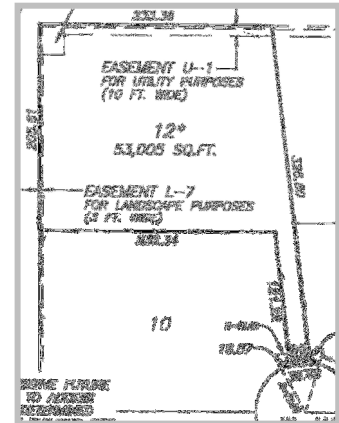
121 West Ahuli'u Way in Waikapu



**10,000 to 50,000 sq ft
FENCED and GRAVELED
WITH ELECTRIC & WATER**

\$0.15 per sq ft

1 year term preferred
M-1 Light Industrial Zoning



CONTACT THE AGENT:

Commercial Properties of Maui
Ben Walin, CCIM R (B)
bwalin@ccim.net
(808) 244-2200

*This property is also listed
FOR SALE.
\$1,750,000 FS.*