

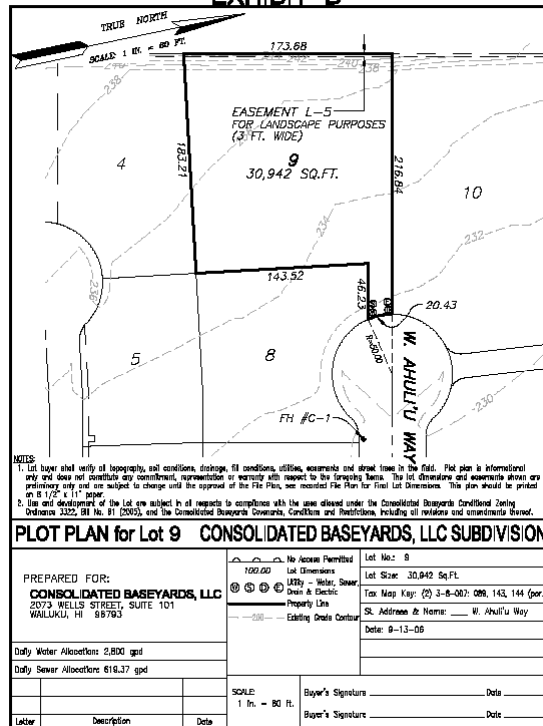


COMMERCIAL PROPERTIES OF MAUI LLC  
 SUITE 400, 1955 MAIN STREET, WAILUKU, HAWAII 96793  
 PHONE (808) 244-2200 FAX (808) 243-8614

## FOR SALE Industrial Vacant Land

### Consolidated Baseyard, Lot 9 in Waikapu

EXHIBIT "D"



**Zoning:** Conditional Light Industrial Zoning (M-1)  
**Area:** 30,941 square feet  
**Price:** \$1,237,640 FS

**Comments:**

- **Water:** Private water system with potable well, tank, and facilities owned by owners association.
- **Drainage:** Common drainage facility. Owner to install filtration on all storm drain water to remove any industrial waste.
- **Sewer:** User to install aerobic individual wastewater system and connect to sewer lateral which leads to a common leach field.
- **Easements:** Water, Sewer, Electrical, Landscaping and Drainage easements affect certain lots.
- **Association:** Fees assessed to maintain common area landscaping, water systems, drainage systems, roads, wastewater systems, etc.

**Selling Agent:**

Commercial Properties of Maui LLC

**Ben Walin**, CCIM RB [bwalin@ccim.net](mailto:bwalin@ccim.net)

808.244.2200

The information contained herein comes from sources deemed reliable, but no warranties or guarantees as to the accuracy of the information should be construed.