



COMMERCIAL PROPERTIES OF MAUI LLC

SUITE 400, 1955 MAIN STREET, WAILUKU, HAWAII 96793

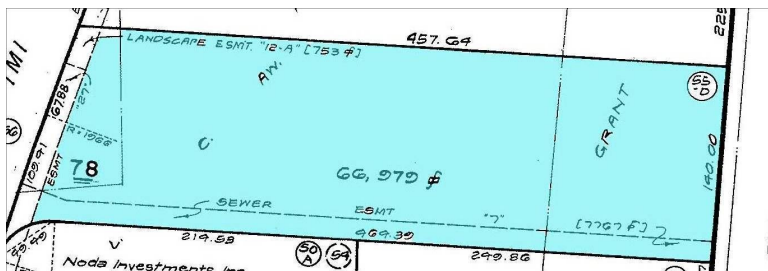
PHONE (808) 244-2200 FAX (808) 243-8614

WWW.MAUIBIZ.COM

Commercial Vacant Land FOR SALE

230 Imi Kala Street

Millyard, Wailuku



LOCATION: In the Millyard, next to the Wailuku Post Office.
ZONING: M-2 (Heavy Industrial)
LAND AREA: 66,979 SF
COMMENTS: Design guidelines are in place.

EXCLUSIVE LISTING AGENTS:

Commercial Properties of Maui LLC
Grant Howe, Principal Broker

ghowe@mauibiz.com

Ben Walin, R (B)

bwalin@ccim.net

808.244.2200