



COMMERCIAL PROPERTIES OF MAUI LLC

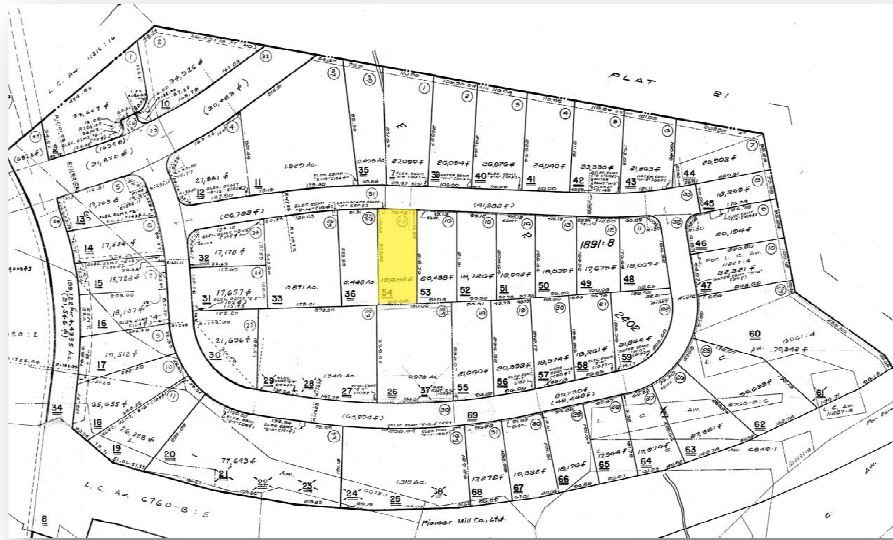
SUITE 400, 1955 MAIN STREET, WAILUKU, HAWAII 96793

PHONE (808) 244-2200 FAX (808) 243-8614

[WWW.MAUIBIZ.COM](http://WWW.MAUIBIZ.COM)

## Commercial Vacant Land FOR SALE

**48 Ulupono Street**  
**Lahaina Business Park, Phase 2 - Lot 17**  
TMK (2) 4-5-10-54



Lot Area: 19,822 sq ft  
Price: \$750,000 FS or \$37.72/sq ft

### **COMMENTS**

Phase 2 Lahaina Business Park vacant land. Light industrial zoned (M-1) commercial lot with plans for 8,500 sq ft building. Lot is level and ready to build.

### **EXCLUSIVE LISTING AGENT:**

Commercial Properties of Maui LLC

Greg Sheehan, R(S)

[gsheehan@mauibiz.com](mailto:gsheehan@mauibiz.com)

(808) 244-2200