



COMMERCIAL PROPERTIES OF MAUI LLC

SUITE 400, 1955 MAIN STREET, WAILUKU, HAWAII 96793

PHONE (808) 244-2200 FAX (808) 243-8614

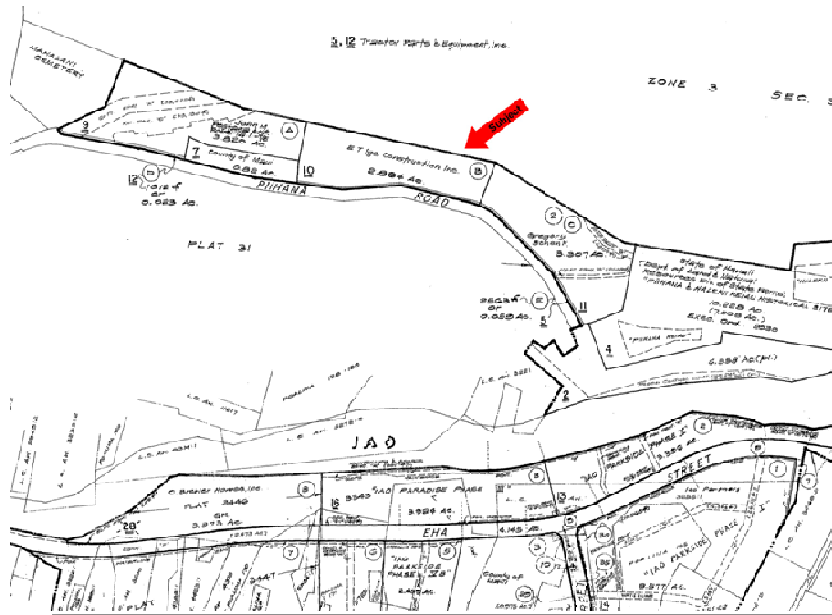
WWW.MAUIBIZ.COM

Residential Vacant Lot FOR SALE

Pi'ihana Road in Wailuku

\$990,000 FS

TMK: (2)-3-4-30-10



Land Area: 2.86 acres

- Comments:
- County Zoned Ag
 - Community Plan Single Family
 - State Land Use Urban
 - 8" sewer & water lines stubbed to property

Selling Agent:

Commercial Properties of Maui LLC

Bennett J. Walin, CCIM R bwalin@ccim.net

(808) 244-2200

The information contained herein comes from sources deemed reliable, but no warranties or guarantees as to the accuracy of the information should be construed.