



COMMERCIAL PROPERTIES OF MAUI LLC

SUITE 400, 1955 MAIN STREET, WAILUKU, HAWAII 96793

PHONE (808) 244-2200 FAX (808) 243-8614

WWW.MAUIBIZ.COM

Vacant Land FOR SALE

Kou Place

Wailuku, Maui, Hawaii

TMK (2) 3-4-17-35

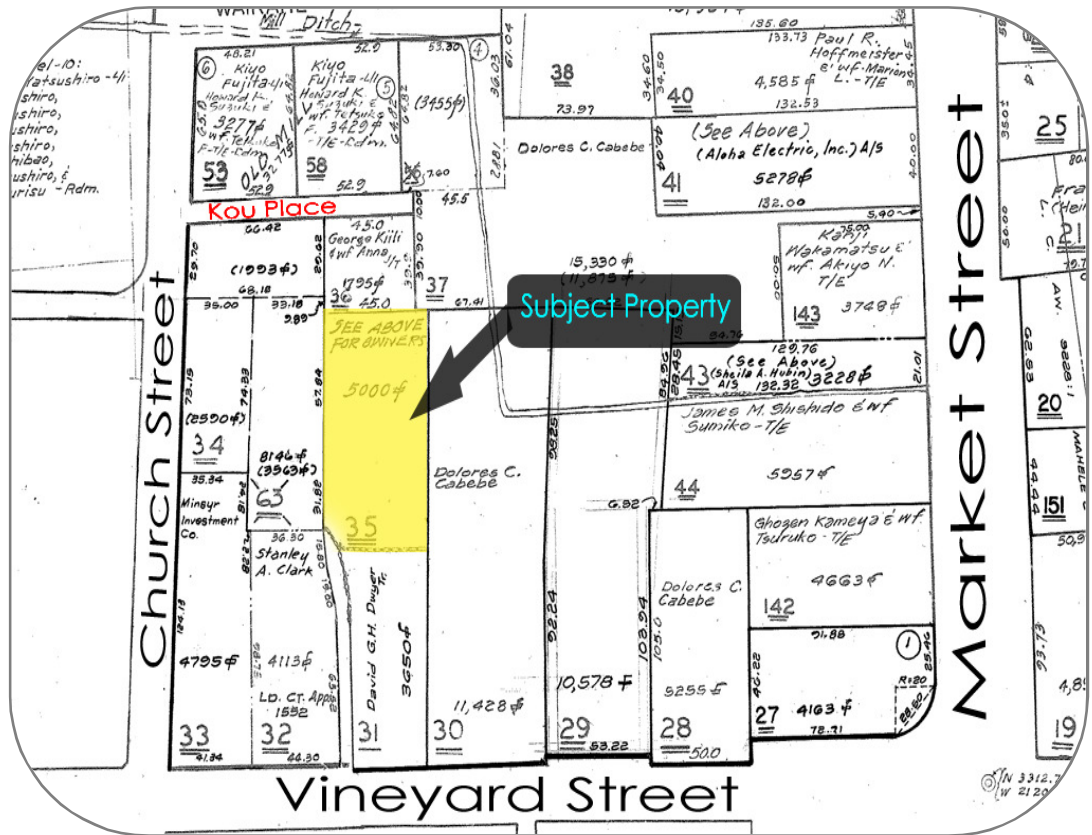
\$179,000 FS

5,767 sq ft

R-1 zoned

Flag lot with level topography

No water



EXCLUSIVE LISTING AGENT:

Commercial Properties of Maui LLC

Greg Sheehan, R (S)

gsheehan@mauibiz.com

(808) 244-2200

The information contained herein comes from sources deemed reliable, but no warranties or guarantees as to the accuracy of the information should be construed.

